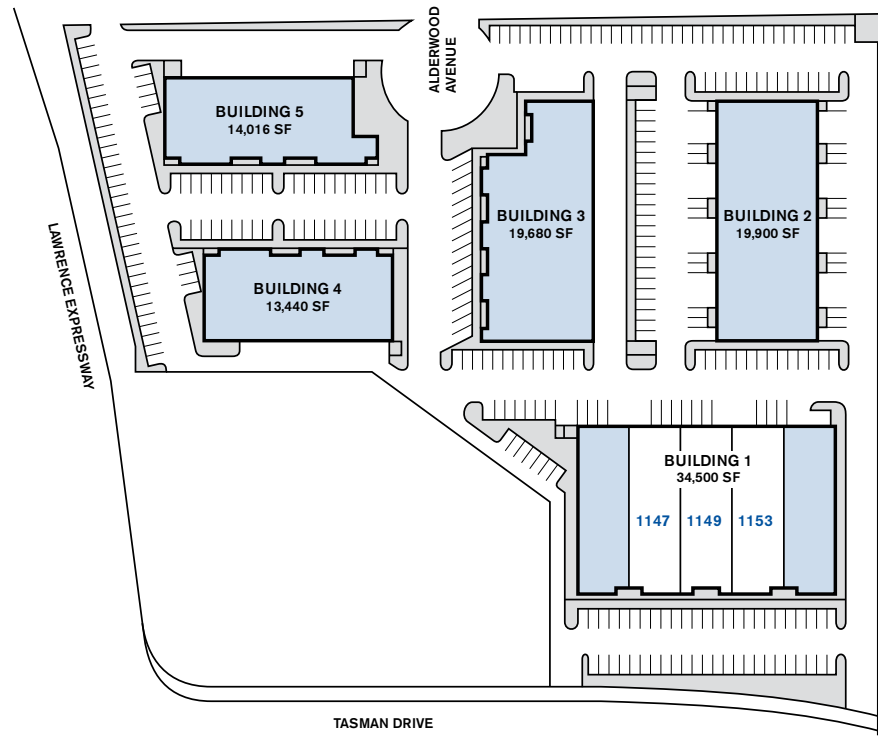


Tasman Industrial Center

R&D/Light Manufacturing/Warehouse
6,918 - 20,645 Square Feet Available



Tasman Industrial Center

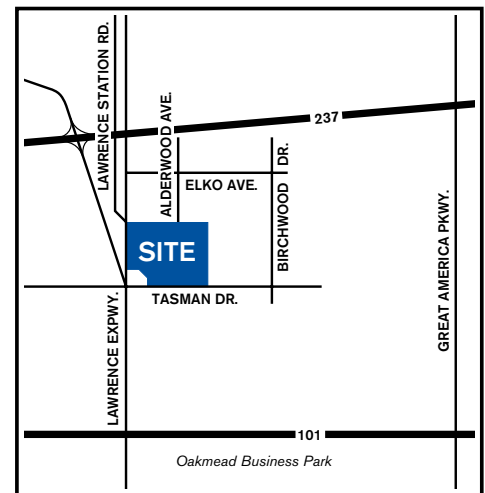
Sunnyvale, California

FEATURES

- New updated interiors to be completed March, 2012
- Central location at Lawrence Expressway and Tasman Drive
- Easy access to Highways 237, 101 and 85
- Ample parking
- Restaurants within walking distance
- Light Rail accessible

AVAILABLE SUITES AND SIZES

- **1153 Tasman Drive** | 6,918 SF | Building 1
- **1147 & 1149 Tasman Drive** | 13,727 SF | Building 1
Suites 1147 and 1149 are contiguous with 1153 for a total of 20,645 SF.
- Available for occupancy March, 2012



For more information contact:

Nancy Zaro

Tel 408.796.0038
Fax 408.379.6782
nzaro@southbay.us
Lic. 01316364

Paula Parisi

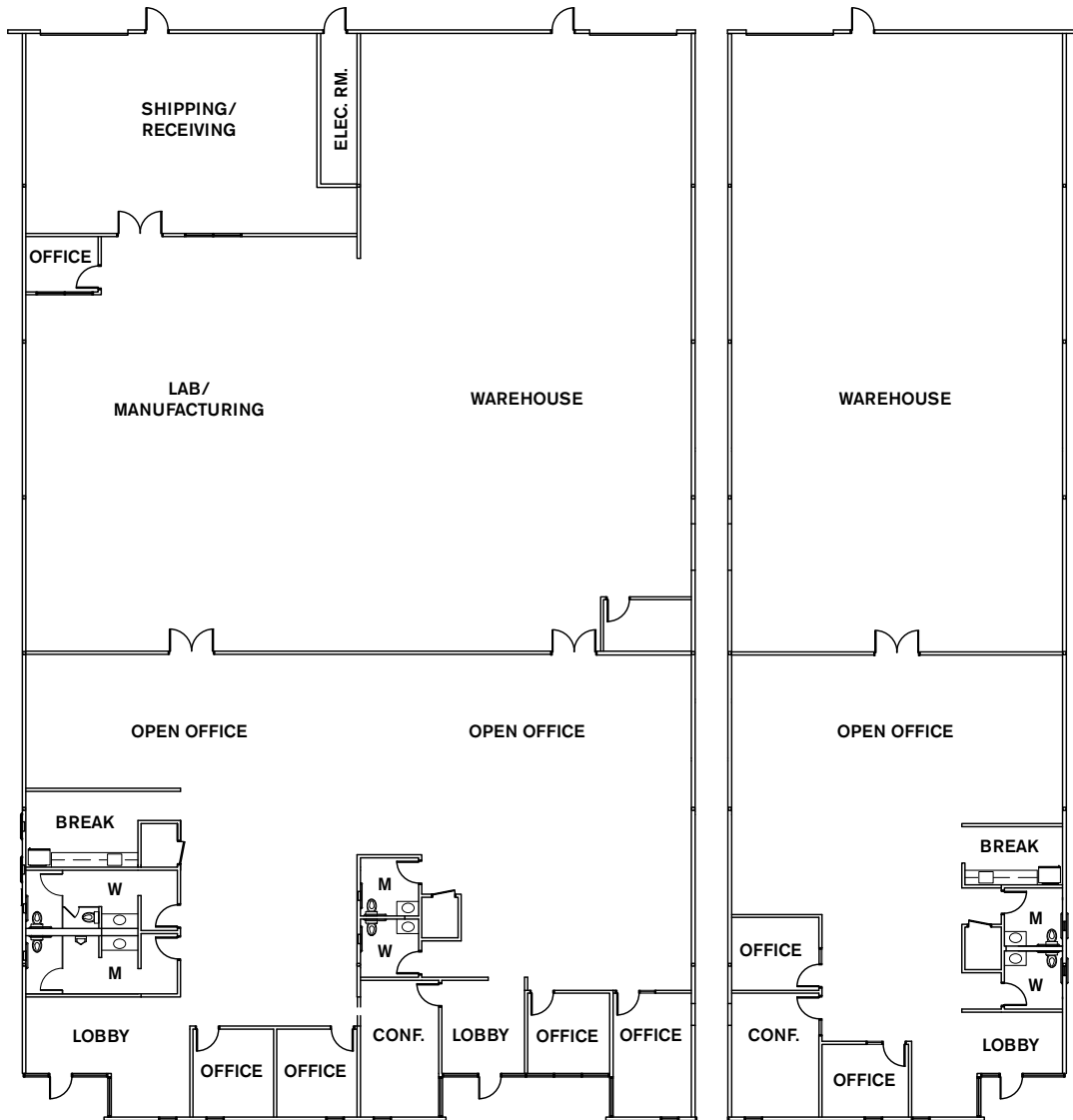
Tel 408.796.0028
Fax 408.379.6782
pparisi@southbay.us
Lic. 01762550

South Bay
DEVELOPMENT COMPANY

1690 Dell Avenue, Campbell, CA 95008
Tel 408.379.0400 | Fax 408.379.3229
www.southbay.us

Tasman Industrial Center

R&D/Light Manufacturing/Warehouse
6,918 - 20,645 Square Feet Available



1147 & 1149 Tasman Drive
13,727 SF

1153 Tasman Drive
6,918 SF

Suites 1147 and 1149 are contiguous with 1153 for a total of 20,645 SF.

For more information contact:

Nancy Zaro
Tel 408.796.0038
Fax 408.379.6782
nzaro@southbay.us
Lic. 01316364

Paula Parisi
Tel 408.796.0028
Fax 408.379.6782
pparisi@southbay.us
Lic. 01762550

South Bay
DEVELOPMENT COMPANY

1690 Dell Avenue, Campbell, CA 95008
Tel 408.379.0400 | Fax 408.379.3229
www.southbay.us