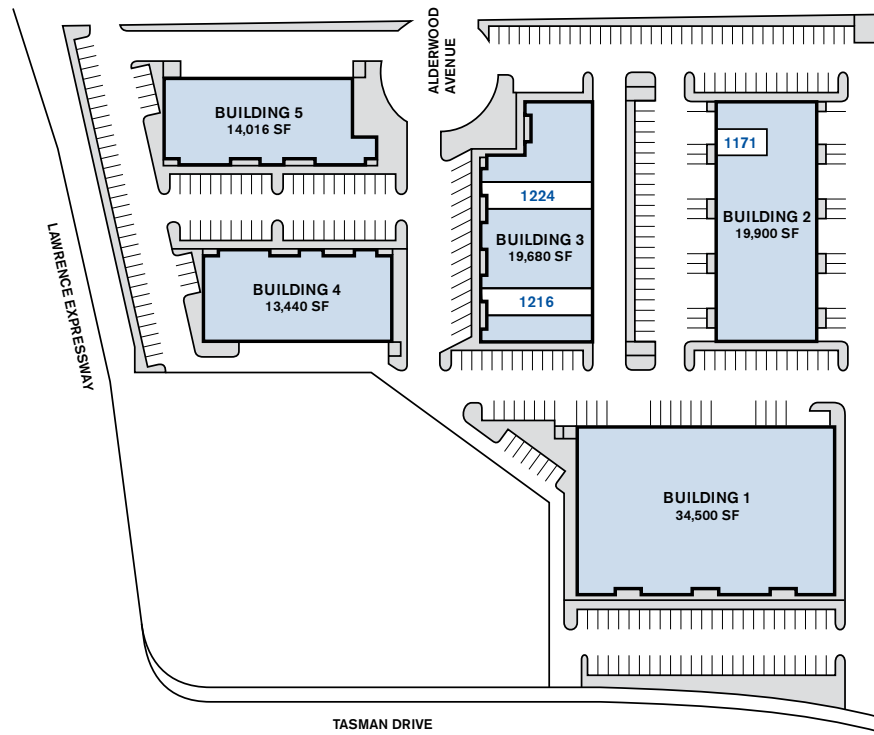


Tasman Industrial Center

R&D/Light Manufacturing/Warehouse
1,110 – 2,413 Square Feet Available



Tasman Industrial Center

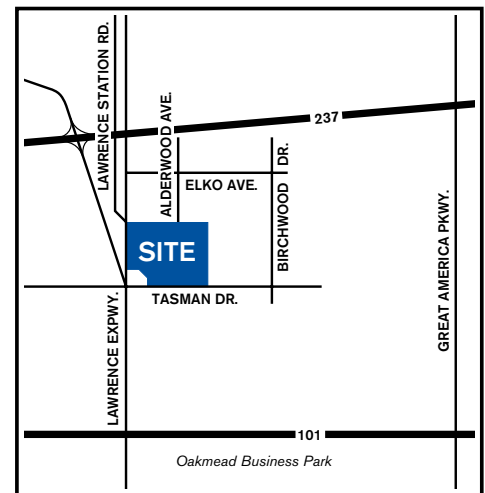
Sunnyvale, California

FEATURES

- Central location at Lawrence Expressway and Tasman Drive
- Easy access to Highways 237, 101 and 85
- Ample parking
- Restaurants within walking distance
- Light Rail accessible

AVAILABLE SUITES AND SIZES

- **1216 Alderwood Avenue** | 2,413 SF | Building 3
- **1224 Alderwood Avenue** | 2,413 SF | Building 3
- **1171 Tasman Drive** | 1,110 SF | Building 2



For more information contact:

Nancy Zaro

Tel 408.796.0038
Fax 408.379.6782
nzaro@southbay.us
Lic. 01316364

Paula Parisi

Tel 408.796.0028
Fax 408.379.6782
pparisi@southbay.us
Lic. 01762550

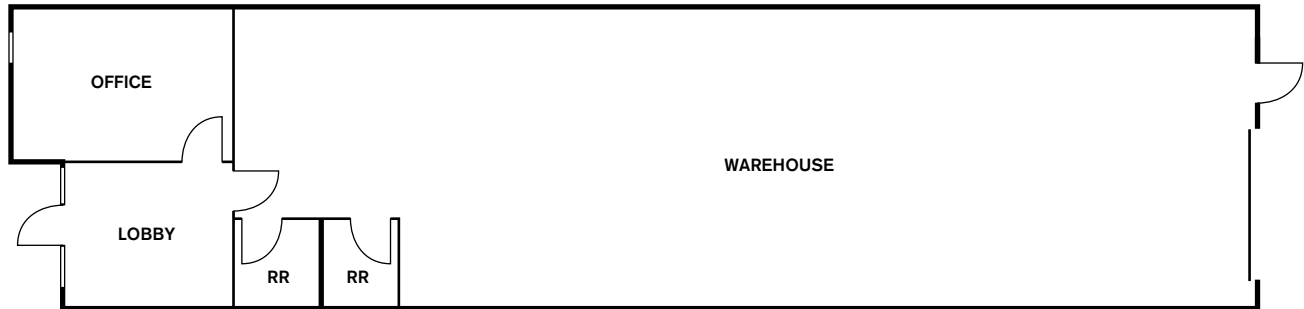
South Bay
DEVELOPMENT COMPANY

1690 Dell Avenue, Campbell, CA 95008
Tel 408.379.0400 | Fax 408.379.3229
www.southbay.us

Tasman Industrial Center

R&D/Light Manufacturing/Warehouse
1,110 – 2,413 Square Feet Available

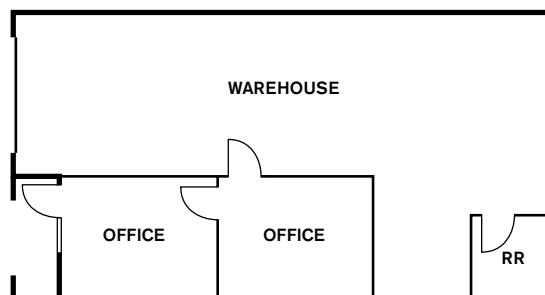
1216 Alderwood Avenue | 2,413 SF



1224 Alderwood Avenue | 2,413 SF



1171 Tasman Drive | 1,110 SF



For more information contact:

Nancy Zaro

Tel 408.796.0038

Fax 408.379.6782

nzaro@southbay.us

Lic. 01316364

Paula Parisi

Tel 408.796.0028

Fax 408.379.6782

pparisi@southbay.us

Lic. 01762550

South Bay
DEVELOPMENT COMPANY

1690 Dell Avenue, Campbell, CA 95008

Tel 408.379.0400 | Fax 408.379.3229

www.southbay.us