

Campbell Office

4,297 Square Feet Available

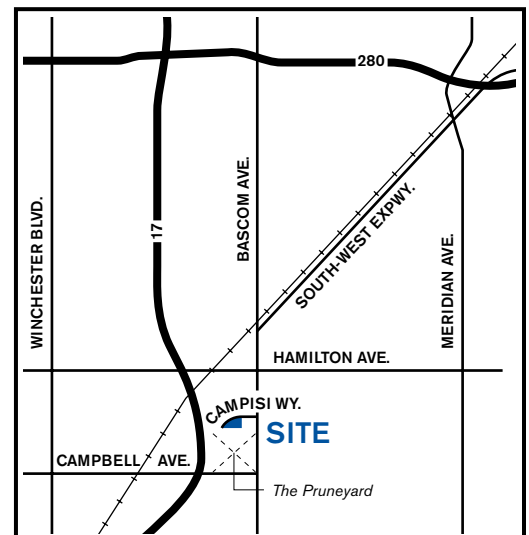
FOR LEASE



910 Campisi Avenue Campbell, California

FEATURES

- Class A second floor office suite
- Full Service / Plug & Play
- Excellent Campbell location
- Easy access to Highways 880, 280 and 85
- Walking distance to restaurants, major shopping and Campbell Creek Park, walking and cycling trails



For more information contact:

Paula Parisi

Tel 408.796.0028

Fax 408.379.6782

pparisi@southbay.us

Lic. 01762550

Lisa Maggio

Tel 408.796.0039

Fax 408.379.6782

lmaggio@southbay.us

Lic. 01247702

South Bay
DEVELOPMENT COMPANY

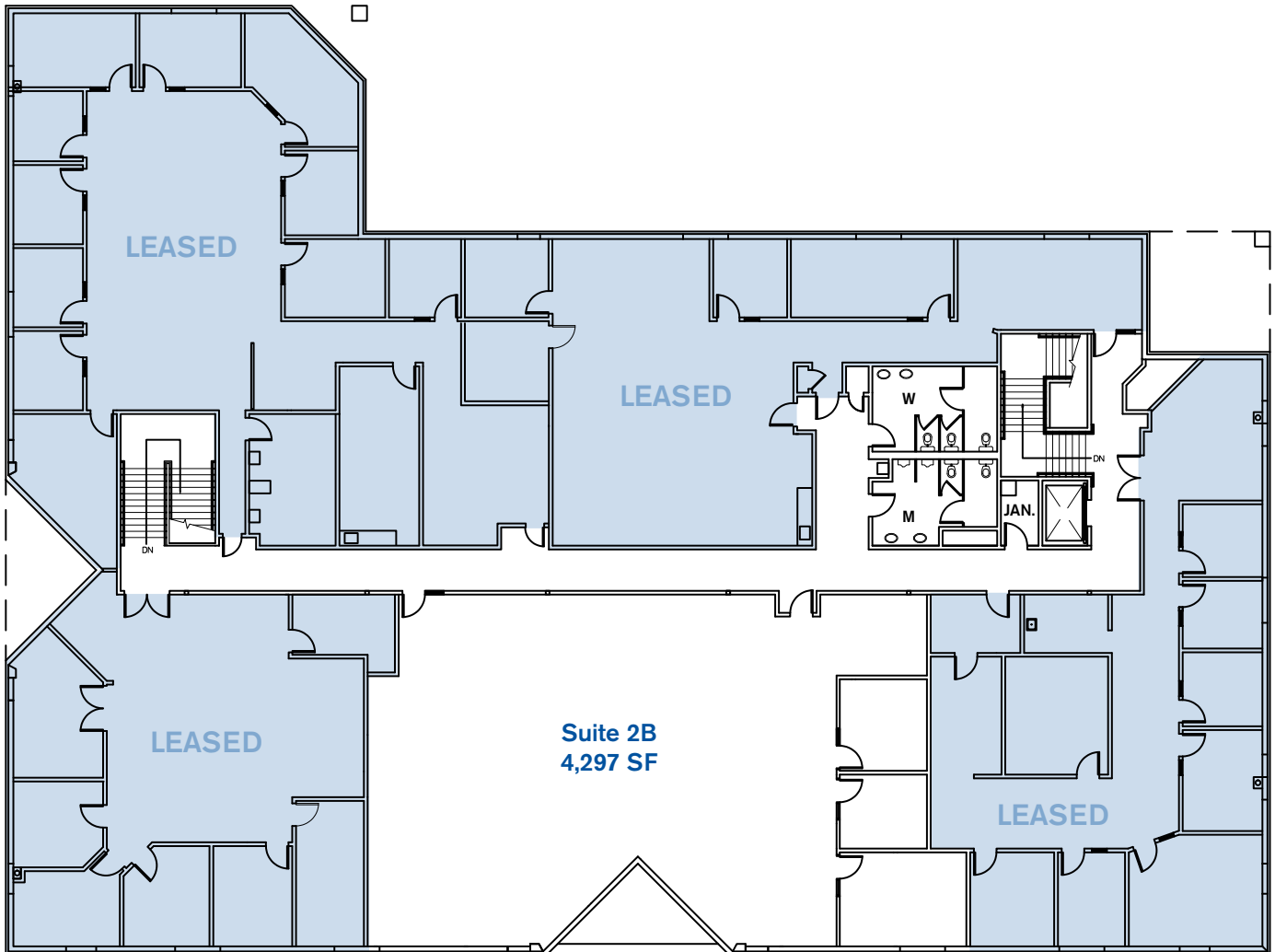
1690 Dell Avenue, Campbell, CA 95008

Tel 408.379.0400 | Fax 408.379.6782

www.southbay.us

Campbell Office

4,297 Square Feet Available



For more information contact:

Paula Parisi

Tel 408.796.0028

Fax 408.379.6782

pparisi@southbay.us

Lic. 01762550

Lisa Maggio

Tel 408.796.0039

Fax 408.379.6782

lmaggio@southbay.us

Lic. 01247702

South Bay
DEVELOPMENT COMPANY

1690 Dell Avenue, Campbell, CA 95008

Tel 408.379.0400 | Fax 408.379.6782

www.southbay.us