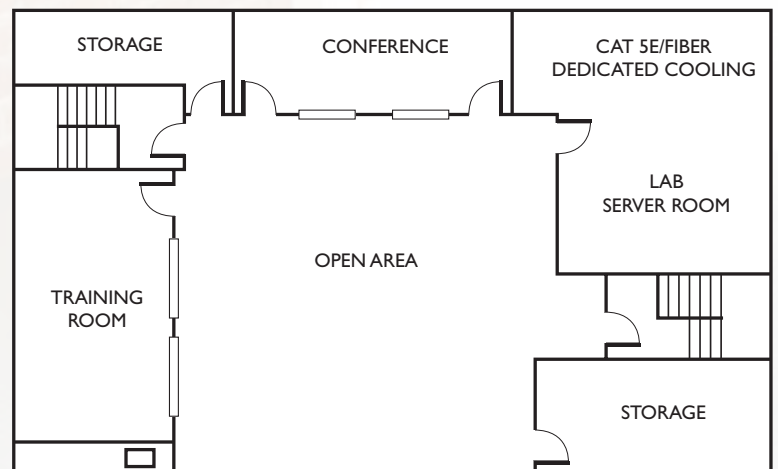
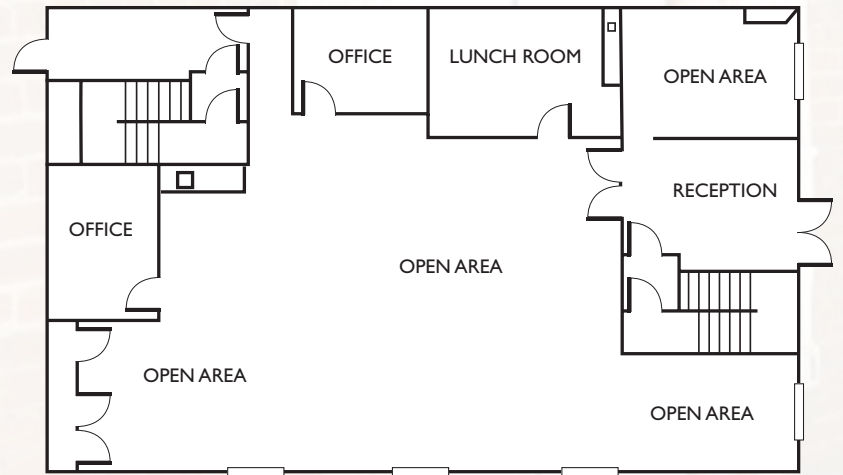
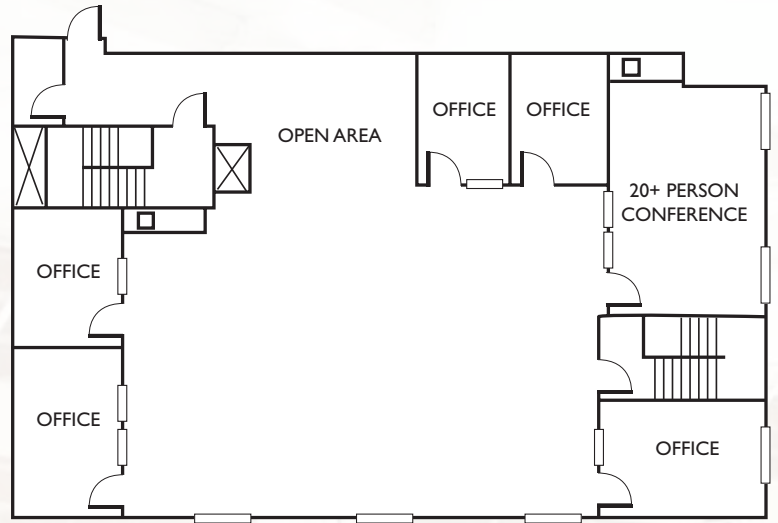




300 Orchard City Drive

Campbell, CA



300 Orchard City Drive

Campbell, CA

Highlights

- Creative, loft-type office space
- Located in the heart of historic downtown Campbell
- Steps away from VTA light rail
- Covered on-site parking with electric vehicle charging system
- Larger server room with dedicated air and raised floor
- Fiber to building



Amenities

- Pruneyard
- Sonoma Chicken Coop
- Aqui
- Komatsu Japanese Cuisine
- Twist Cafe
- Starbucks
- and many other restaurants and cafes.

A Brief History



Hyde Cannery



Drying Apricots

What we now know as Water Tower Plaza, was previously named Hyde Cannery. This fruit packing operation was established by the Flemming brothers and was built adjacent to the railroad tracks south of the depot. The new business was one of two drying establishments in the area started by the brothers.

During the drying season of 1887, the Flemmings had 700 employees and shipped 1,800 tons of apricots and over 2,500 tons of other fruit. That summer 120 carloads of dried fruit were shipped out of Campbell to the east coast. In 1892 orchardists established a farmer's cooperative and the Campbell Fruit Growers Union was organized and took over this facility, which included 16 acres of fruit drying yards.

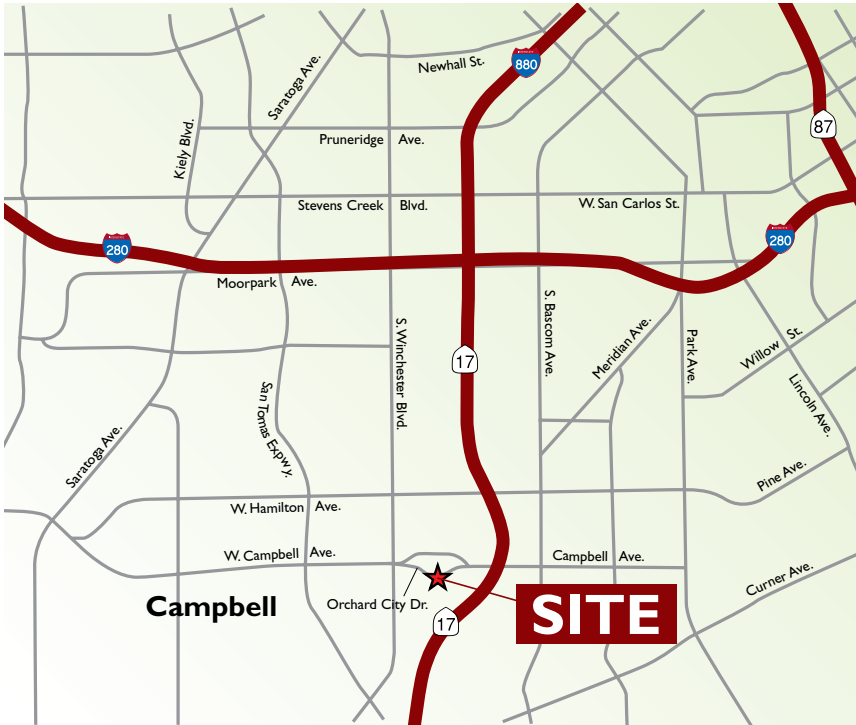
In 1909 George E. Hyde bought the fruit growers' acreage and converted it to a cannery, using some acreage for drying yards. Sunsweet Growers, Inc. took over in 1937 and was here until 1971. At one time this was one of the largest drying yards in the world.

300 Orchard City Drive

Campbell, CA

300 Orchard City Drive

Campbell, CA



Paul Griffiths

pgriffiths@ccarey.com

408.982.8475

Lic. 01432670

Ryan Brandenburg

rbrandenburg@ccarey.com

408.982.8453

Lic. 01815223



2804 Mission College Blvd, Suite 120 • Santa Clara, CA 95054
Tel: 408.727.9600 Fax: 408.988.6340

