

North First Corporate Center

±20,340 Square Feet Available

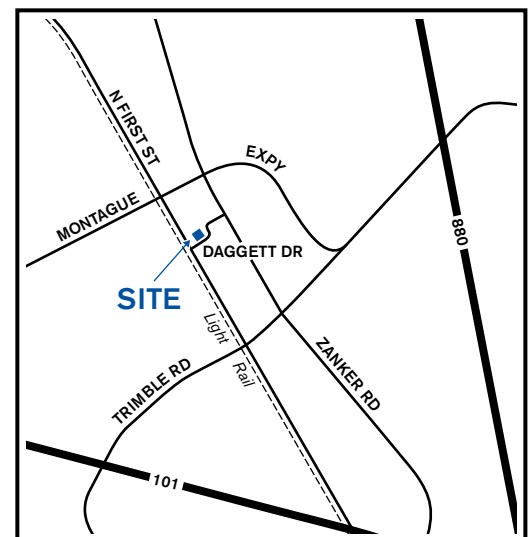


FOR LEASE

71 Daggett Drive North San Jose, California

FEATURES

- 40% office
- 60% manufacturing/warehouse
- 27.5 tons of air to manufacturing area
- Near Light Rail station
- Heavy power
- 1 grade level door
- 1 dock high door
- 3.9/1,000 parking



For more information contact:

David Andris

Tel 408.796.0032

Fax 408.379.3229

dandris@southbay.us

Lic. 01408094

South Bay
DEVELOPMENT COMPANY

1690 Dell Avenue, Campbell, CA 95008

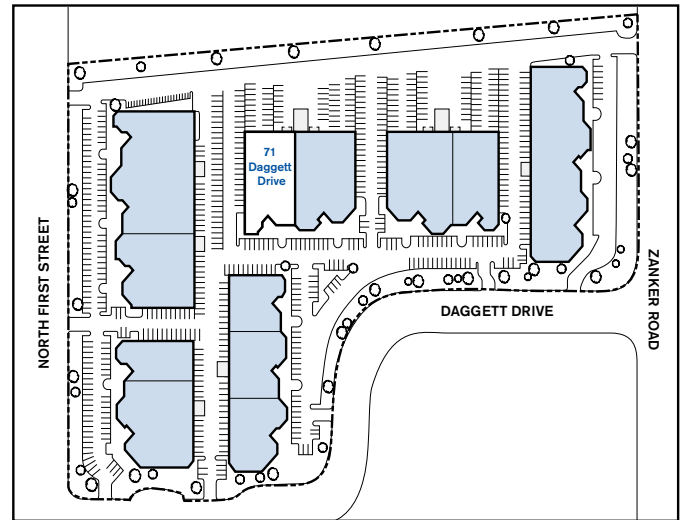
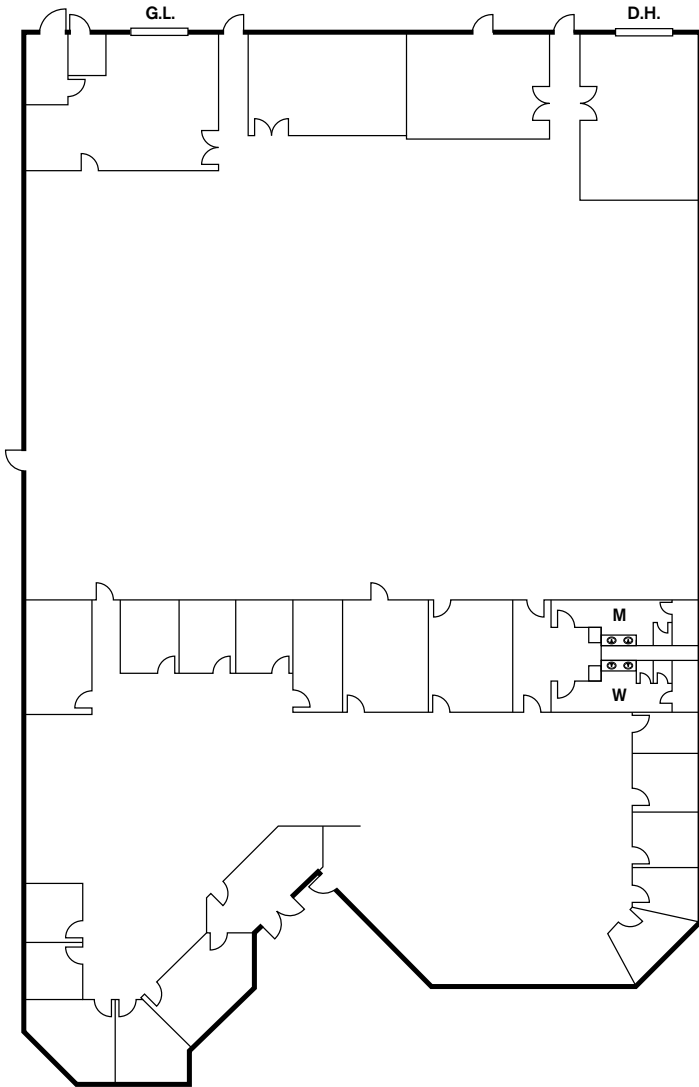
Tel 408.379.0400 | Fax 408.379.3229

www.southbay.us

North First Corporate Center

±20,340 Square Feet Available

71 Daggett Drive



For more information contact:

David Andris

Tel 408.796.0032

Fax 408.379.3229

dandris@southbay.us

Lic. 01408094

South Bay
DEVELOPMENT COMPANY

1690 Dell Avenue, Campbell, CA 95008

Tel 408.379.0400 | Fax 408.379.3229

www.southbay.us